



Newham London

NHS
Newham

Joint Strategic Needs Assessment 2010
The London Borough of Newham

18th January 2011

6.0 Demography

6.1 Introduction

What is the population of Newham? That is not an easy question to answer, as it has been nearly ten years since the last Census and there have been such major changes in Newham with housing development and new migration from the European Union countries.

There are two main sources of population data - the Greater London Authority (GLA) and the Office for National Statistics (ONS). The GLA produces annual population projections for London boroughs, using housing development data to model migration flows. This source provides a time-series of change and projections into future years, ethnic projections, and ward-level population projections. The GLA figures show Newham as having a growing population, given the level of housing development in the borough.

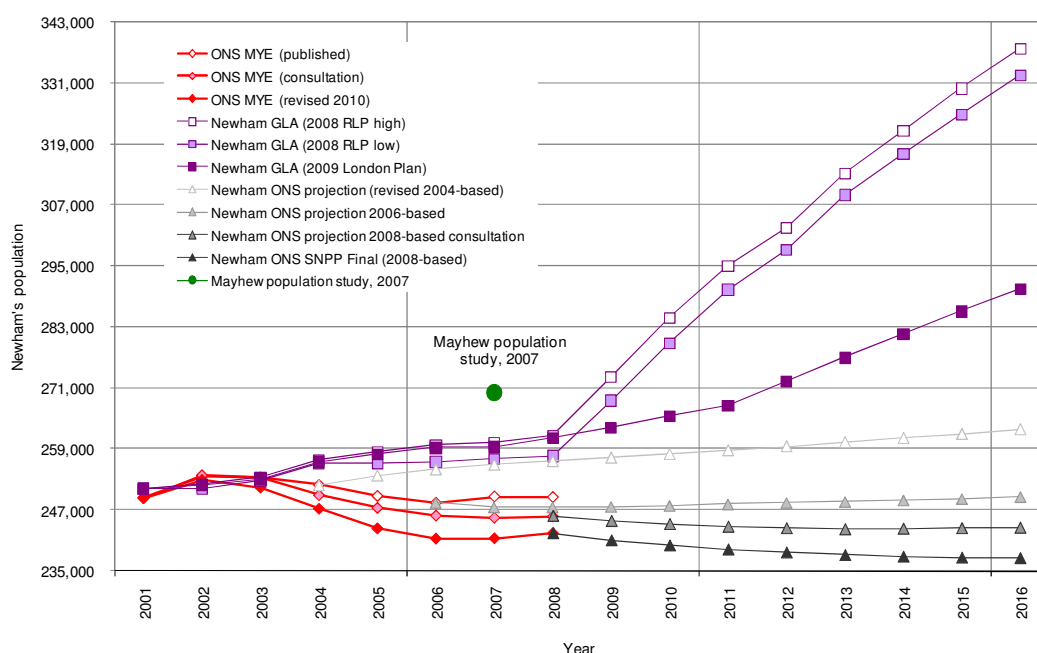
ONS produce two main population figures that are commonly used – the Mid-Year Estimate (MYE) and population projections for future years. In contrast to the GLA figures the most recent MYE show Newham’s population declining since 2002, with a loss of more than 8,000 between 2001 and 2009.

According to the Office of National Statistics (ONS) current population estimates (2008) for Newham, the borough has witnessed a decline in its population of 7,000 to 242,700 compared to the 2001 Census. The ONS projects that the population will decline until 2016, before rising, but remaining below its 2001 levels until 2033. In contrast, Greater London Authority (GLA) population estimates calculate Newham’s population in 2008 as 257,600. A figure 15,000 higher than ONS population estimates.

The difference between GLA and ONS figures reflect ONS methodology, which uses past trends of migration. These do not mirror the trends of new patients registering with doctors or new foreign workers registering for National Insurance Numbers. The 2008-based ONS population projections show Newham having a declining population until 2016, while the GLA projects increasing growth in Newham’s population, given the housing development in the borough and its likelihood of attracting new residents.

It is recommended that GLA figures are used in preference to ONS. The 2008-round low-variant projection will be used for this report, as the 2009-round projection was available for only the borough-level at the time of writing.

Figure 6.1: Newham’s population, comparing ONS, GLA and Mayhew



Source: ONS 2010, GLA 2008, Mayhew 2007

6.2 Migration and administrative data

Administrative data does not provide a complete count of new migrants, but indicates the size of in-flows to the borough. The two main sources of administrative data which collect nationality are National Insurance Number registration's (NINO) and registration with a doctor (Flag 4). These data sources will include only those who have registered, and should be seen as only partial in their coverage.

Table 6.1: Comparing ONS international migration with administrative data

| Source | | 2001/2 | 2002/3 | 2003/4 | 2004/5 | 2005/6 | 2006/7 | 2007/8 |
|-----------------------------|--------|--------|--------|--------|--------|--------|--------|--------|
| ONS international migration | IN | 10,492 | 8,855 | 7,730 | 6,553 | 7,289 | 8,529 | 7,424 |
| | NET | 8,129 | 5,536 | 5,890 | 4,008 | 4,204 | 5,645 | 3,452 |
| Administrative data | NINO | - | 8,510 | 8,460 | 10,270 | 14,880 | 16,160 | 20,510 |
| | FLAG 4 | 9,775 | 10,020 | 11,710 | 12,096 | 11,816 | 11,017 | 9,738 |

Source: ONS Components of Change; DWP (NINO data), ONS (Flag 4), 2008

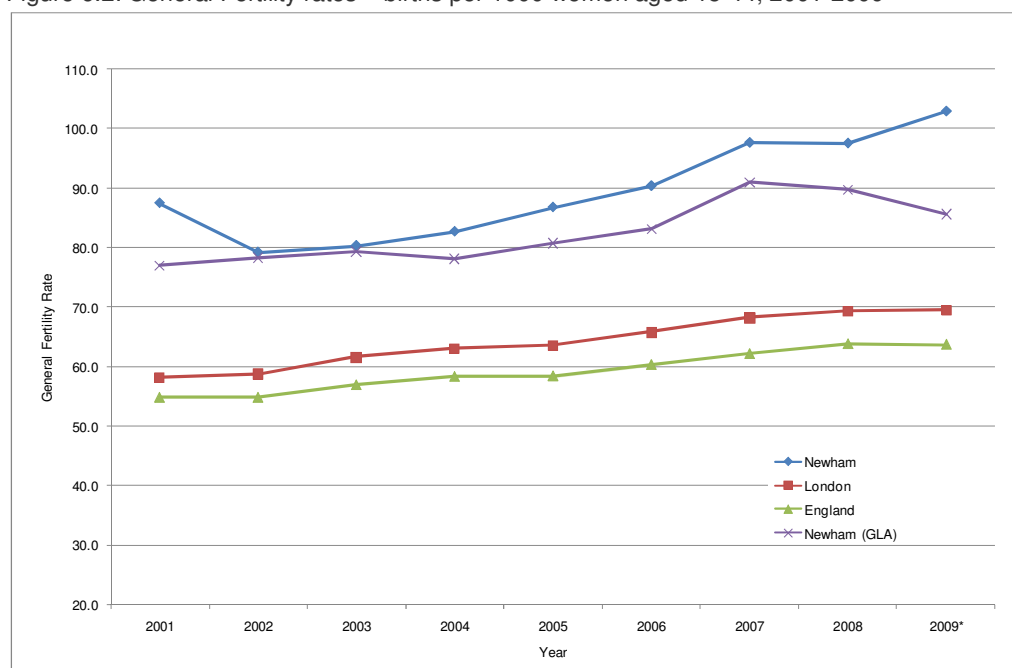
6.3 Births and deaths

6.3.1 Births

The other components of population change include births and deaths, which are recorded by ONS. Newham has had the highest birth rate in the country for several years, and this continued in 2009. The rates calculated with ONS population estimates for Newham are believed to be too high; producing a population of women aged 15-44 that is too small. The fertility rates using the GLA population projections produce a lower fertility rate which shows a more recent decline rather than a continuing increase. The GLA have higher levels of young adult women in their projections than ONS.

According to the ONS birth summary tables, in 2009 Newham had the highest number of births (6,003), the highest general fertility rate (105.8) and the highest total fertility rate (2.96) in London.

Figure 6.2: General Fertility rates – births per 1000 women aged 15-44, 2001-2009

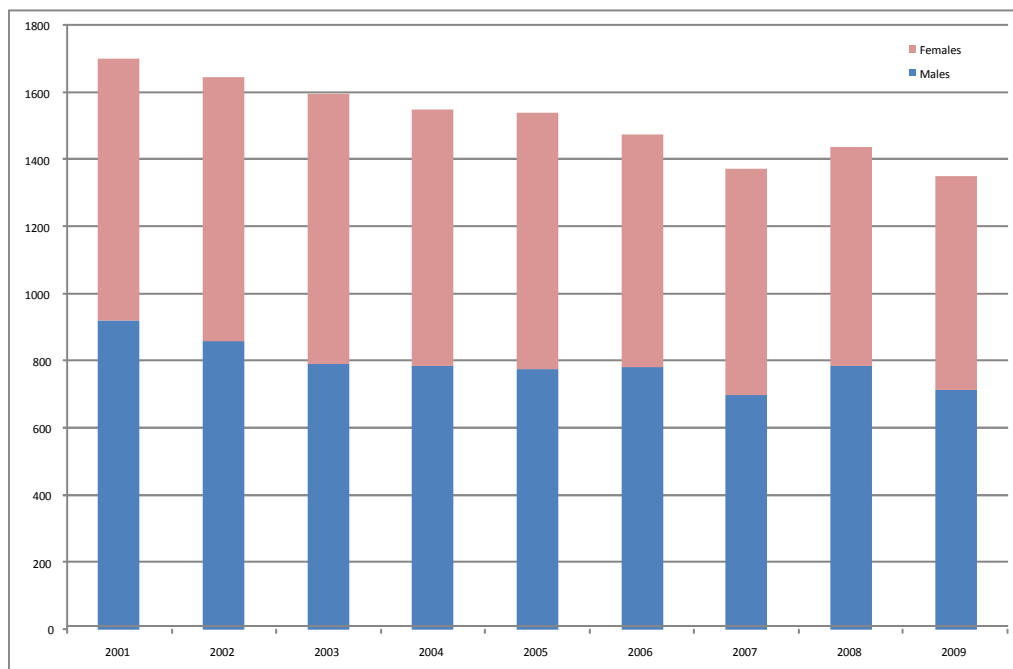


Source: ONS, GLA calculated using 2008 low population projection (*2009 data is provisional)

6.3.2 Deaths

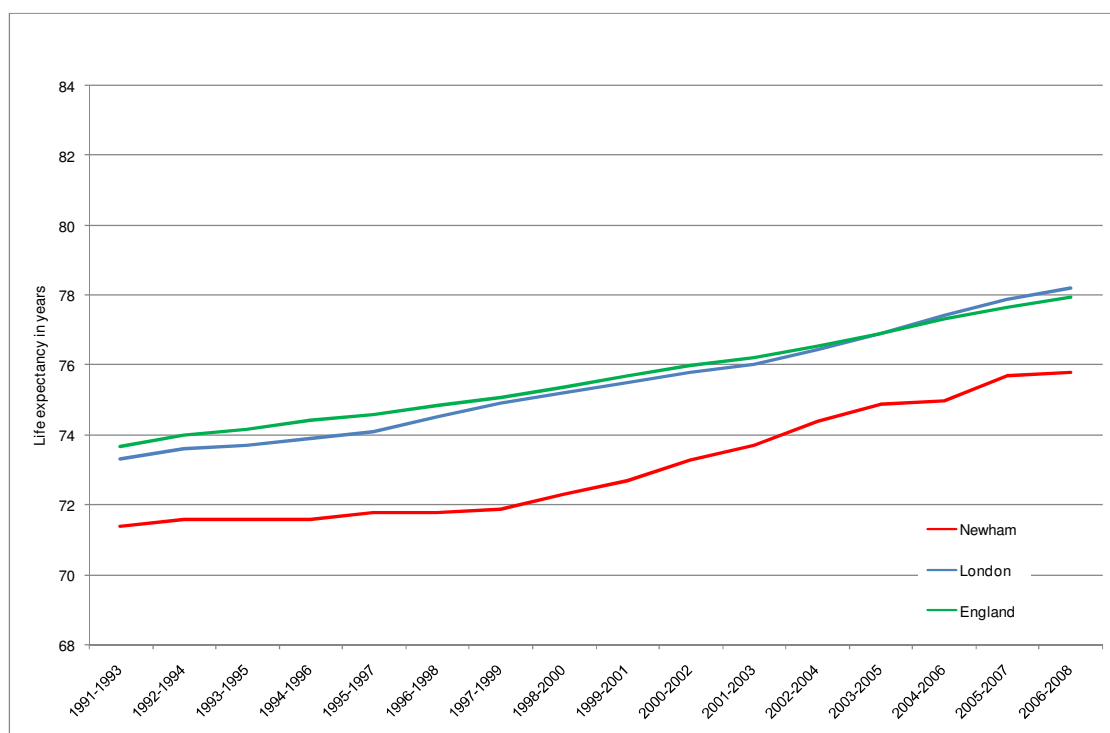
Deaths, along with births, are recorded events that impact upon the population. The number of deaths in Newham has fallen over time and is due, at least in part, to the young population structure of the borough.

Figure 6.3: Deaths by gender, 2001-2009



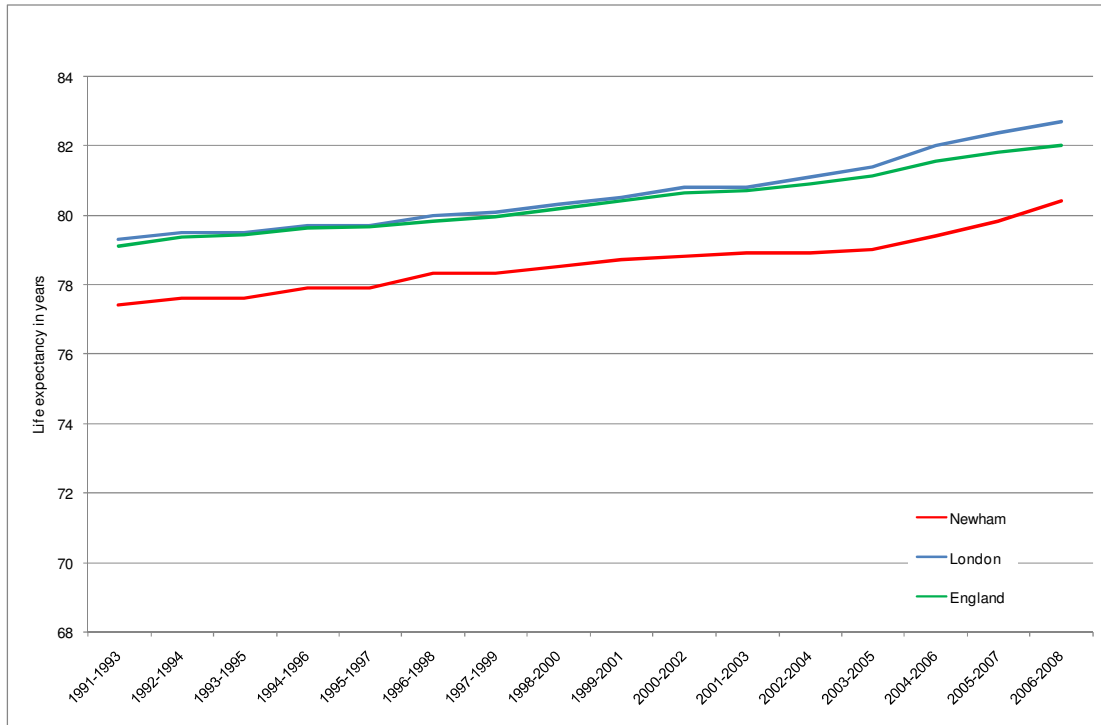
Source: National Statistics, 2009

Figure 6.4: Trend in life expectancy at birth in males of Newham, London and England, 1991 to 2008



Source: National Statistics, 2008

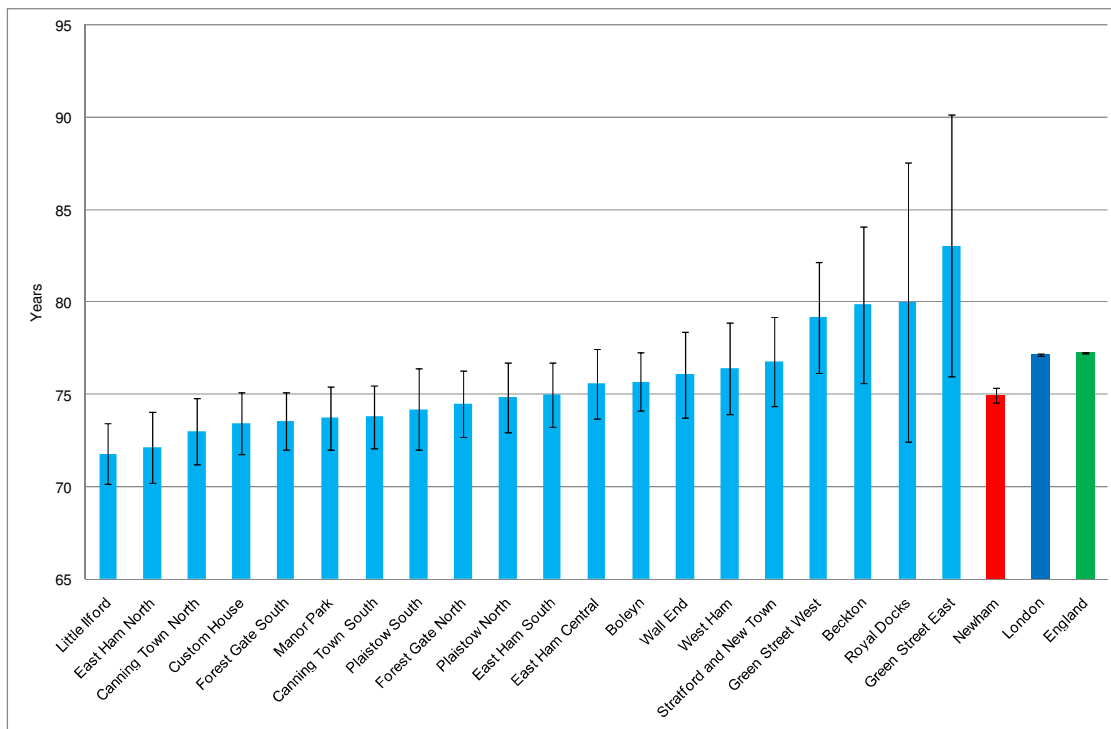
Figure 6.5: Trend in life expectancy at birth in females of Newham, London and England, 1991 to 2008



Source: National Statistics, 2008

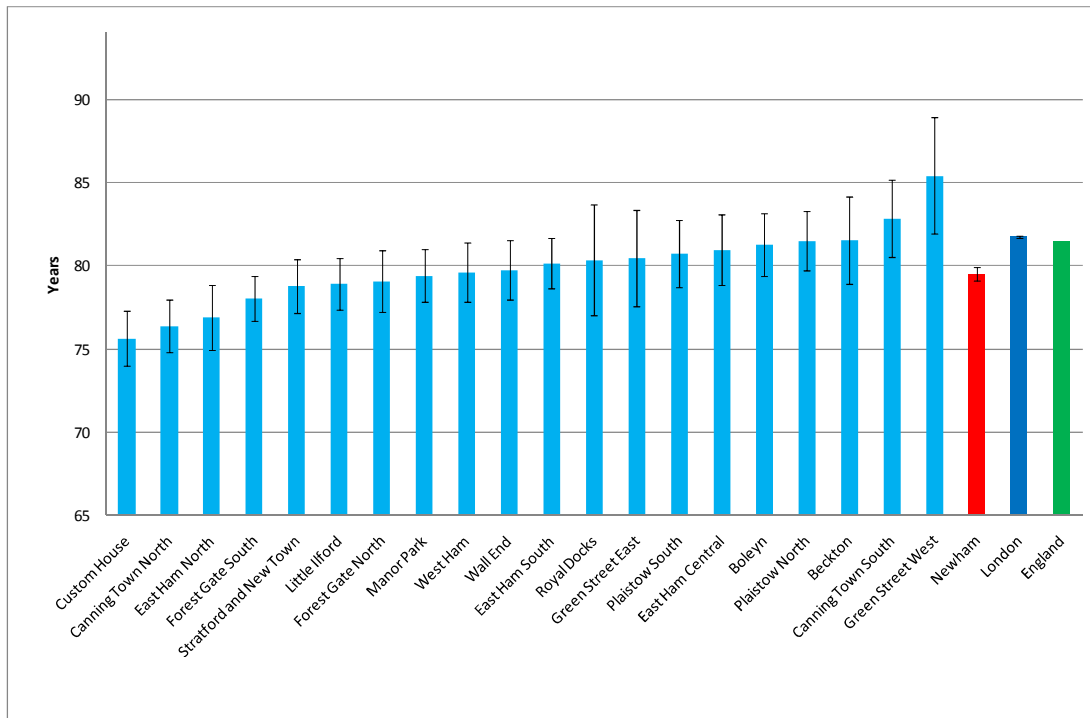
There is also disparity within wards for life expectancy. The lowest life expectancy for males is in Little Ilford, while the highest is in Green Street East, where the difference between them is 11.3 years, but could be as little as 2.6 years or as much as 20 years. Female life expectancy in Custom House is the lowest in the borough, and highest in Green Street West, with a difference of 9.8 years.

Figure 6.6: Life expectancy at birth in males for Newham wards, 2003 - 2007



Source: London Health Observatory, 2008

Figure 6.7: Life expectancy at birth in females for Newham wards, 2003 - 2007



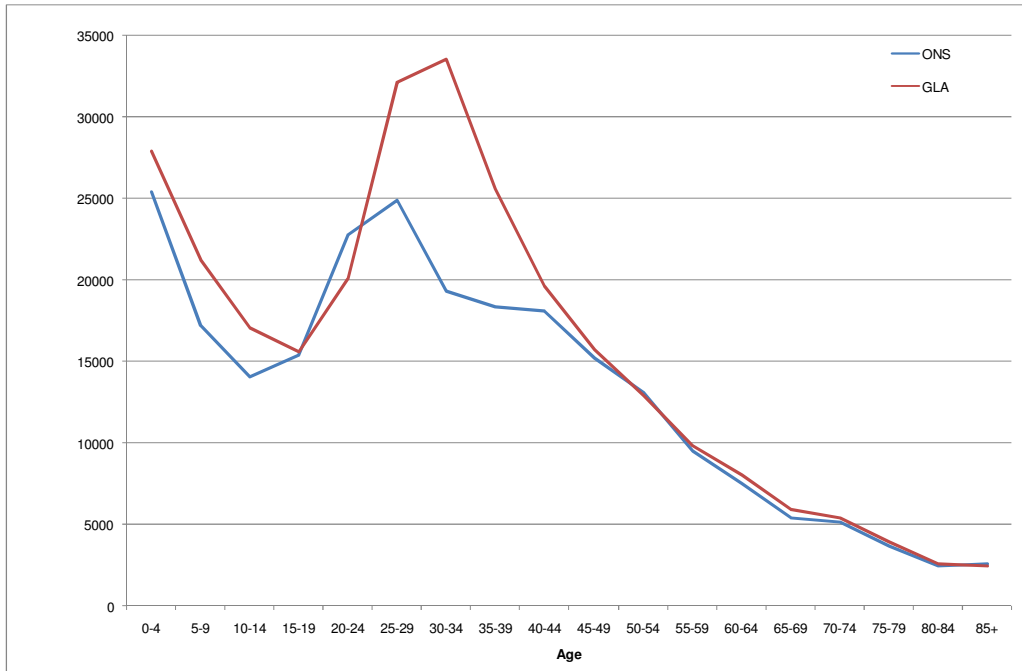
Source: London Health Observatory, 2008

6.4 Population structure

6.4.1 Age

There are clear differences as well as similarities between the GLA and ONS figures for age breakdowns. The striking difference is in the young adult population, where the ONS show a much smaller adult population between the ages of 25-44. GLA projections also show that, in common with London as a whole, Newham has more people of working age than the national average and fewer older people. In 2010, three quarters of Newham's population were under 45, compared to two-thirds for London as a whole. Over one-third of Newham's population was under 25 years of age, compared to the London average of 30%.

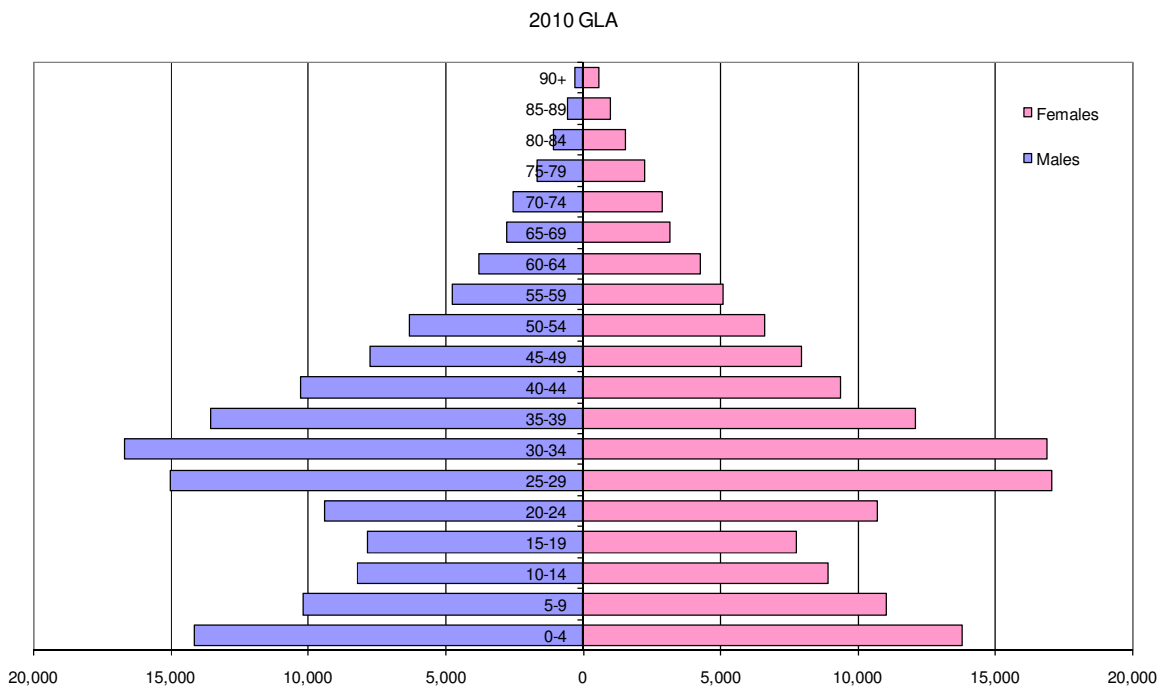
Figure 6.8: Newham's population by age, comparing ONS and GLA, 2010



Source: ONS 2008-based population projections for 2010, GLA 2008-round Low projection for 2010

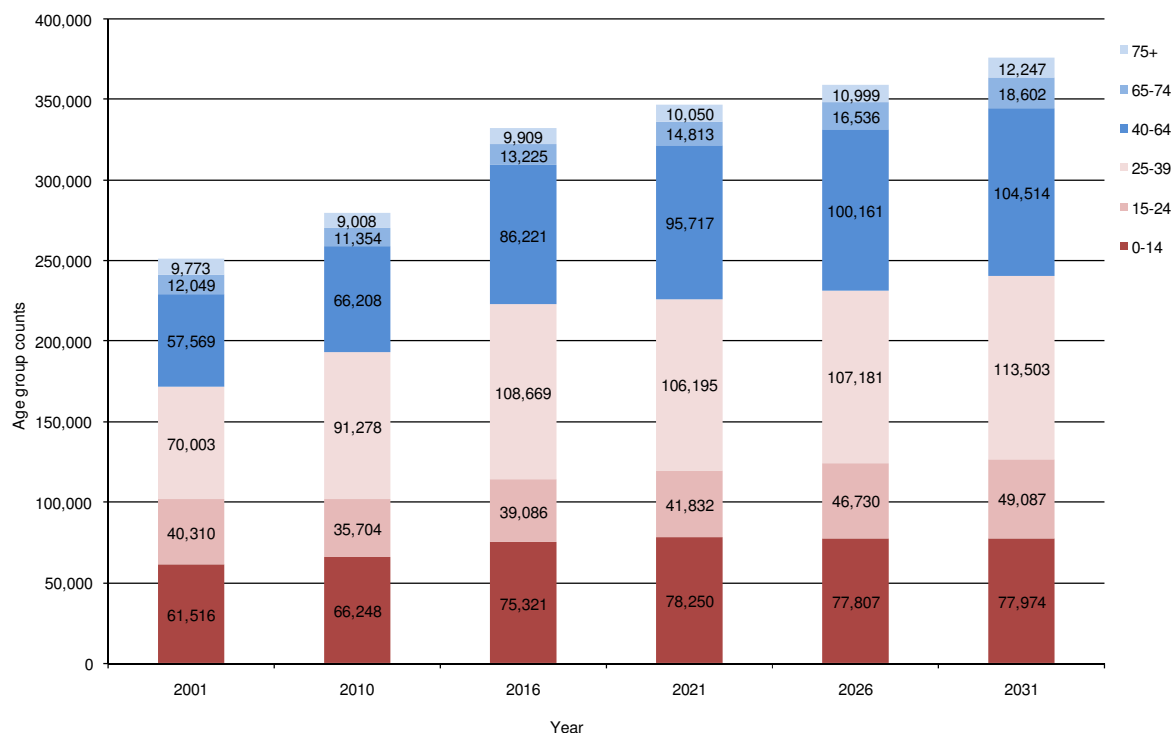
Figure 6.9 shows the age band breakdown of the GLA projection for 2010. This shows a young population structure, with a broad base on children, an adult “bulge” and declining numbers of older age groups. The large number of young adults contributes to the projections continuing to have large numbers of children.

Figure 6.9: Newham population by age, 2010



Source: GLA 2008-round Low projections for 2010

Figure 6.10: Newham age band, GLA projections 2001-2031



Source: GLA 2008-round Low projections

Over time, the proportion of young people in the population is projected to decline slightly over the next five years, and then rise again. The proportion of population aged 40-64 is projected to increase as the population ages. GLA projections expect the over 65 population to remain about 7% of the total population.

6.4.2 Gender

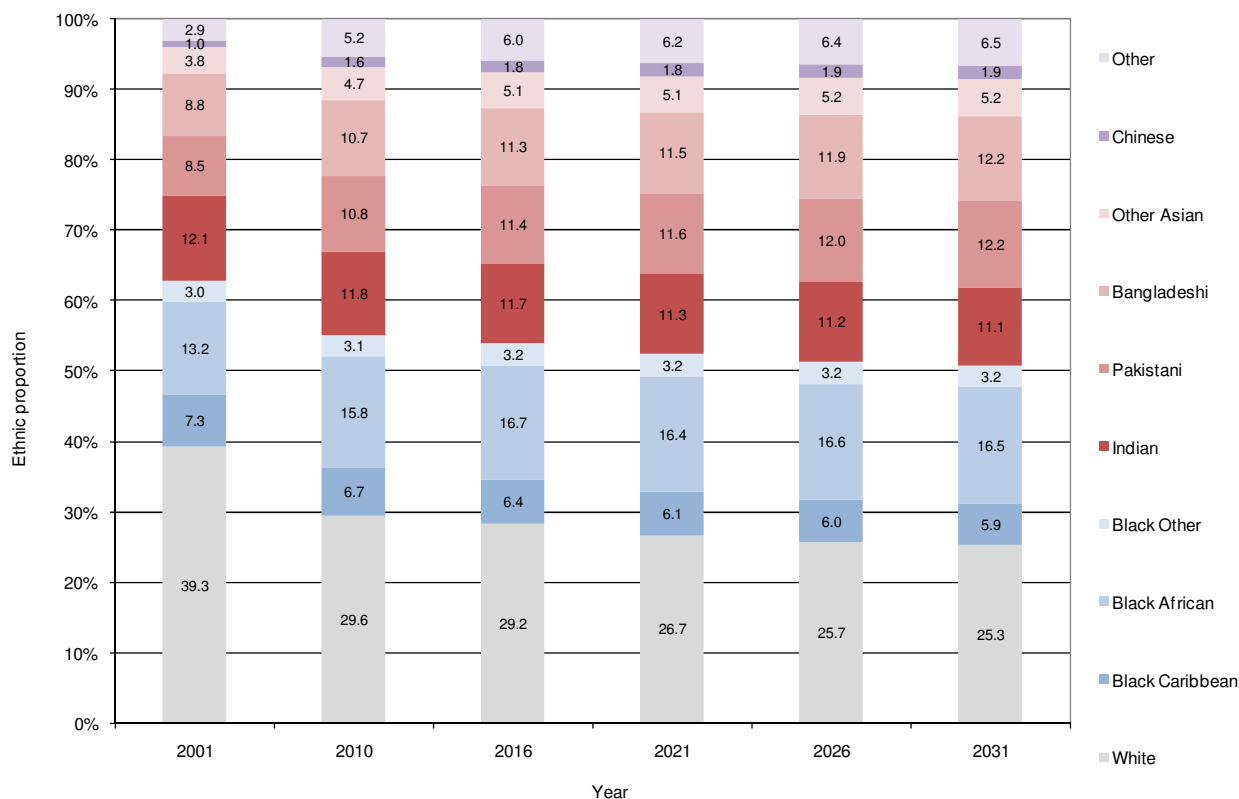
According to GLA 2009 (revised), projections for 2010, there are 129,963 males in Newham and 135,725 females. Therefore the ratio of males to females is 49:51.

6.4.3 Ethnicity

According to the 2008-round projections from the GLA, 70% of the population is from BAME groups. The largest BAME group is Black African with 15.8% of the total population in 2010, and this remains the largest BAME group over time. Asian ethnic groups are also significant in Newham with Indians (11.8%), Pakistanis (10.8%) and Bangladeshis (10.7%) comprising nearly one-third of the borough's population. See Figure 6.11 for change over time, indicating growth in Black African and Pakistani, Bangladeshi and Other Asian, Chinese and Other populations, while longer-established ethnic groups (White, Black Caribbean and Indian) show decline.

The GLA ethnic projections do not adequately account for new international migration flows, and the "White" population presented in them will not reflect the recent increase in Eastern European migration to the borough. The Other group which doubles in proportion between 2001 and 2016 comprised mixed ethnicities and will have a young population profile.

Figure 6.11: Newham's ethnic groups, 2001-2031



Source: GLA Low 2008-round ethnic projections

6.4.4 Religion

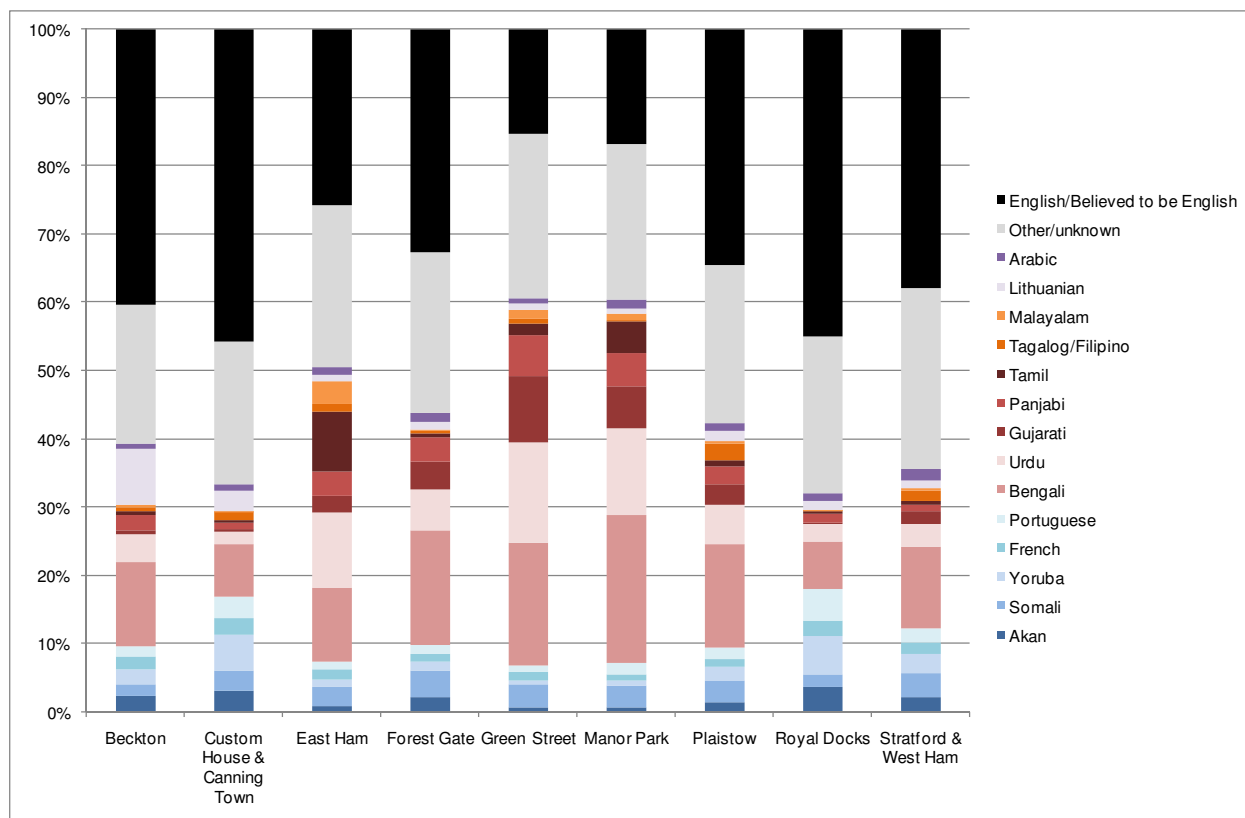
The only comprehensive source of data on religion is the 2001 Census, where a voluntary question was asked of respondents. This indicated a breakdown in Newham of 46.8% Christian, 24.3% Muslim, 9.0 % No religion, 9% Religion not stated, 6.9% Hindu, 2.8% Sikh, 0.7% Buddhist, 0.3% other religions and 0.2% Jewish.

6.4.5 Language

Language data is not readily available for the whole of Newham's population, but the Schools Census data collects information on home language, while Newham's language shop can provide details of the languages that require translation.

Figure 6.12 identifies the distribution of the top 15 languages across Newham's community forums, along with the aggregate of all other languages. Having a home language other than English does not necessarily mean a lack of proficiency in English, so this data should be used with caution. It provides a useful indication of the geography of different communities.

Figure 6.12: Percentage distribution of top 15 languages across Community Forums



Source: Schools Census, 2008

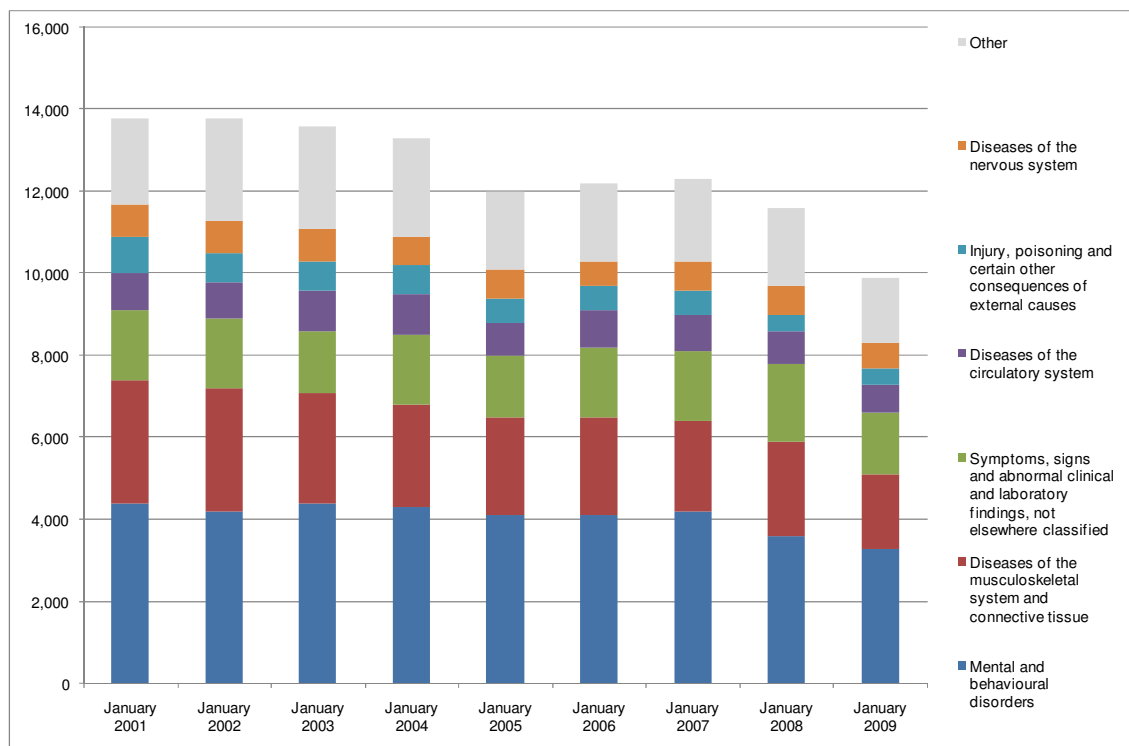
6.4.6 Disability

There is little data available to support this topic. The Census provided information on “limiting long-term illness” (LLTI), which can be used as a proxy for disability, but this data is out of date. The 2001 Census indicated that 17.3% of Newham’s population was reported to have LLTI (ranked 5th in London) and 15.6% of its working age population had a LLTI (ranked 3rd in London). However, those with a LLTI and who reported themselves as having “Not good health” comprised 8.4% of the population aged 16-64, and this proportion of population is ranked 2nd in London, behind Hackney.

More current, but less comprehensive data is available from claimants of Incapacity Benefit, Severe Disablement Allowance and Disability Living Allowance. Data derived from a 5% sample of claimants is made available by DWP. In November 2009, Newham had 10,200 people in receipt of IB/SDA, ranking 3rd among Olympic Host boroughs. Nearly one-third of all claimants of IB/SDA claimed for a condition of mental and behavioural disorders. In comparison to the other Olympic Host boroughs, the proportion of claimants receiving benefits due to mental and behavioural disorders was the lowest, while those receiving IB/SDA for diseases of the musculoskeletal system and connective tissue was the highest (a total of 1,800 claimants).

While claimants of IB/SDA in Newham have fallen over time, those claiming Disability Living Allowance have grown, with mental health causes being the most common condition among claimants. A key issue for Newham are the large number of migrant workers who have no recourse to Public Funds and Disability related benefits. The scale of this problem is unknown, but given the high numbers of migrant workers in Newham it is considered to be significant.

Figure 6.13: Claimants of Incapacity Benefit and Severe Disablement Allowance, by condition, Jan 2001-Jan 2009



Source: DWP, 5% sample, Nomis, 2009

Estimates of prevalence and severity of disability by age (16+) and sex have been published from the Health Survey for England 2001. The rates have been applied to Newham's GLA population in Table 6.2, resulting in a total of 26,000 people with moderate or severe disability. Newham's young population structure results in a lower level of disability expected compared to England.

Table 6.2: Estimated moderate and severe disability by age and gender, aged 16+

| Age | Males | | Females | | Total by age |
|----------|----------|--------|----------|--------|--------------|
| | Moderate | Severe | Moderate | Severe | |
| 16-24 | 518 | 173 | 737 | 84 | 1,613 |
| 25-34 | 1,269 | 317 | 1,697 | 339 | 3,623 |
| 35-44 | 1,431 | 477 | 1,501 | 429 | 3,837 |
| 45-54 | 1,549 | 422 | 1,599 | 436 | 4,006 |
| 55-64 | 1,544 | 601 | 1,588 | 561 | 4,294 |
| 65-74 | 1,337 | 481 | 1,381 | 540 | 3,740 |
| 75-84 | 804 | 388 | 1,203 | 714 | 3,109 |
| 85+ | 345 | 292 | 509 | 668 | 1,814 |
| All ages | 8,798 | 3,152 | 10,215 | 3,871 | 26,035 |

Source: Health Survey of England 2001 rates, applied to GLA 2008-round population projection for 2010

Estimates of the number of people with learning disabilities have been created by Eric Emerson and Chris Hatton at the Institute for Health Research in Lancaster University in 2004, drawing upon administrative data of individuals known to learning disability services and the age and gender data from the 2001 Census. These prevalence rates are applied to Newham's GLA population projections below.

Table 6.3: Estimated learning disability by age and gender

| Age | Males | Females | Total | Age | Males | Females | Total |
|-------|-------|---------|-------|-------|-------|---------|-------|
| 0-4 | 27 | 15 | 42 | 45-49 | 207 | 146 | 353 |
| 5-9 | 123 | 79 | 203 | 50-54 | 159 | 115 | 273 |
| 10-14 | 226 | 154 | 380 | 55-59 | 117 | 89 | 205 |
| 15-19 | 252 | 163 | 415 | 60-64 | 89 | 69 | 158 |
| 20-24 | 292 | 225 | 517 | 65-69 | 60 | 46 | 106 |
| 25-29 | 427 | 338 | 765 | 70-74 | 54 | 41 | 94 |
| 30-34 | 479 | 332 | 811 | 75-79 | 32 | 28 | 60 |
| 35-39 | 382 | 235 | 617 | 80+ | 36 | 38 | 75 |
| 40-44 | 294 | 183 | 477 | Total | 3,256 | 2,296 | 5,552 |

Source: Prevalence rates from Emerson & Hatton, 2004 applied to GLA 2008-round population projection, 2010

6.4.7 Lesbian, Gay, Bisexual and Transgender

There is no comprehensive data source to identify sexual orientation of Newham's population. A report published by the Department of Trade and Industry in 2005 estimated the LGBT population to comprise 6% of the total. This would equate to 16,800 people, using the GLA 2008-based population projection for 2010. In contrast, Newham's Liveability survey sampled 3,620 people, of which 9.7% identified themselves as Bisexual (9.4%) or Gay/Lesbian (0.3%).

